

Sandhill's Enterprise Modeling – Set of Standards, EM-SOS!™ 2.0, establishes the structural and naming standards for metadata, along with associated data management, life cycle, and measurement best practices. This framework, including its automated workflows, is accessible and deployable across your enterprise – ensuring higher levels of data integrity, consistency of data meaning and reuse – while reducing redundancy and cost of ownership.

Is EM-SOS!™ a one-time purchase or are there updates and/or on-going support costs

EM-SOS!™ has a one-time purchase price. Additionally, a maintenance agreement for any additional software updates is encouraged and available.

What are the ongoing costs of EM-SOS!™ (Financial and Data Architecture)

There are no additional financial costs. The Data Architecture ongoing effort varies according to the client's environment, and is determined during the course of implementation.

What is the typical EM-SOS!™ implementation effort?

The typical EM-SOS!™ implementation effort is between 3 to 6 months and is determined via an up front Assessment.

We will likely not use the entire functionality of the tool; Is there a subset of EM-SOS!™ we can load without paying for full functionality?

EM-SOS!™ is delivered as one complete solution.

How does EM-SOS!™ help resolve the issue of how to integrate our legacy models?

In terms of legacy model integration, EM-SOS!™ can provide templates that may be customized based on the specific client's needs.

Our documentation is in Word and Excel. How do we integrate with EM-SOS!™?

We determine the best method of integration during the consulting engagement that accompanies an EM-SOS!™ purchase..

Is the EM-SOS!™ 2.0 Framework compatible with Sharepoint?

Yes


What kind of effort is required to incorporate our current standards to fit into EM-SOS!™?

Our up front Assessment will determine the level of effort required.

What is the typical learning curve for EM-SOS!™?


The administration functions are easy to learn and the user learning curve is equally short.

www.sandhillconsultants.com

 (905) 847-5882

 info@sandhillconsultants.com

 [linkedin.com/company/sandhill-consultants-na](https://www.linkedin.com/company/sandhill-consultants-na)

 @sandhillna

BUSINESS ANALYST



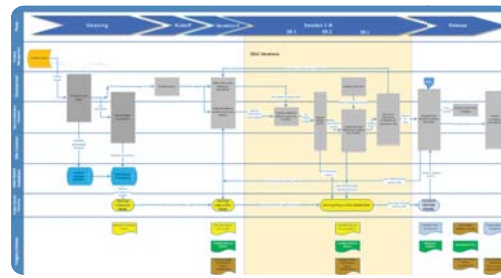
Visualize Standards, Glossary and Business Requirements

DATA STEWARD



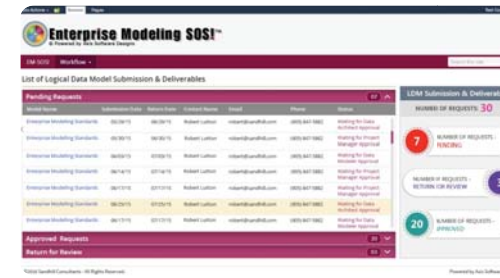
Verify and Validate the Data Model to Modeling Standards

ENTERPRISE ARCHITECT



Develop the Enterprise Architecture Life Cycle to integrate to the SDLC

DATA PROJECT MANAGER



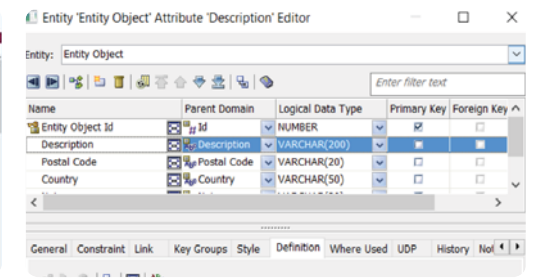
Manage Data Architecture Development

DATA MODELER



Comply with standards, procedures and workflow for Logical Models

DBA



Comply with standards, procedures and workflow for Physical Models



EM-SOS!TM 2.0 ENTERPRISE MODELING SET OF STANDARDS - SHAREPOINT EDITION -

- ✓ Easy to use
- ✓ Reduced redundancy
- ✓ Increases trust & confidence in metadata
- ✓ Provides compliance to standards

EM-SOS!TM WORKFLOW

Submitted Publish



Data Modeler: Name
Date Submitted: Date

Data Architect: Name
Data Steward: Name
Date Reviewed: Date

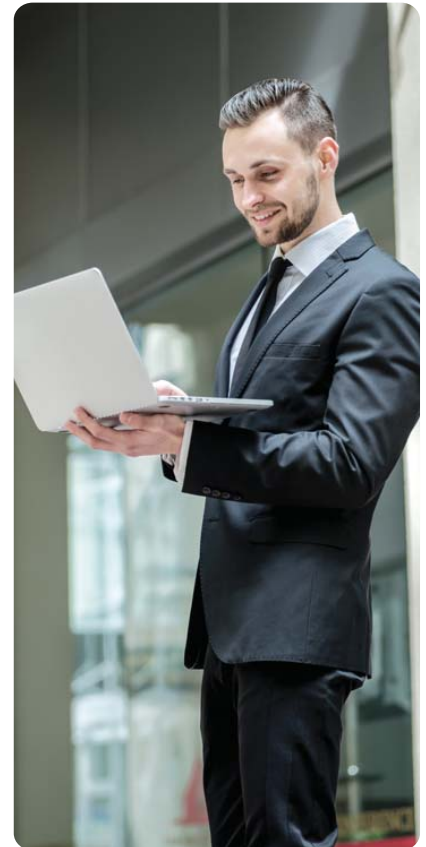
Project Manager: Name
Date Approved: Date

Data Modeler: Name
Date Published: Date

BENEFITS OF EM-SOS!™

WHAT MAKES OUR SOLUTION SO VALUABLE?

- ▶ **Increased Productivity of IT Resources**
 - Reduced redesign
 - Increased reuse
 - Shorter development lifecycle
- ▶ **Ensures Quality & Consistency of Metadata Ensure**
 - Written by industry experts
 - Follows industry concepts & directions
- ▶ **Ease of Use**
 - Built-in automation of standards and process
 - Templates, forms & workflows enforcement
 - Accessibility for resources to build, review and maintain models
- ▶ **Rapid Time to Implement**
 - Significant jumpstart for critical resources




WHAT OUR CUSTOMERS HAVE TO SAY ABOUT EM-SOS!™

- ▶ "Improved collaboration between Business and IT"
- ▶ "Increased responsiveness to customer needs and market changes"
- ▶ "Already realized substantial cost savings due to increased reuse of shared data objects"
- ▶ "Awareness of the importance of data standardization and inclusion of the business"
- ▶ "Improved quality of data objects / artifacts resulting in reduced data / application development time and rework"
- ▶ "Increased consistency in the data design process across the various operating units"
- ▶ "Resources can be more easily shared across multiple design projects"

Compatible with:

erwin
the data governance company

www.sandhillconsultants.com

 (905) 847-5882

 info@sandhillconsultants.com

 [linkedin.com/company/
sandhill-consultants-na](https://www.linkedin.com/company/sandhill-consultants-na)

 @sandhillna